

PCMCIA Serial Installation Guide

This guide includes instructions for installing your PCMCIA serial hardware and software.

If you are using Windows Me/9x, see page 2.

If you are using Windows NT, see page 6.

If you are using Windows 2000, see page 11.

Windows Me/9x

Windows NT

Windows 2000

PCMCIA Serial Installation for Windows Me/9x

1

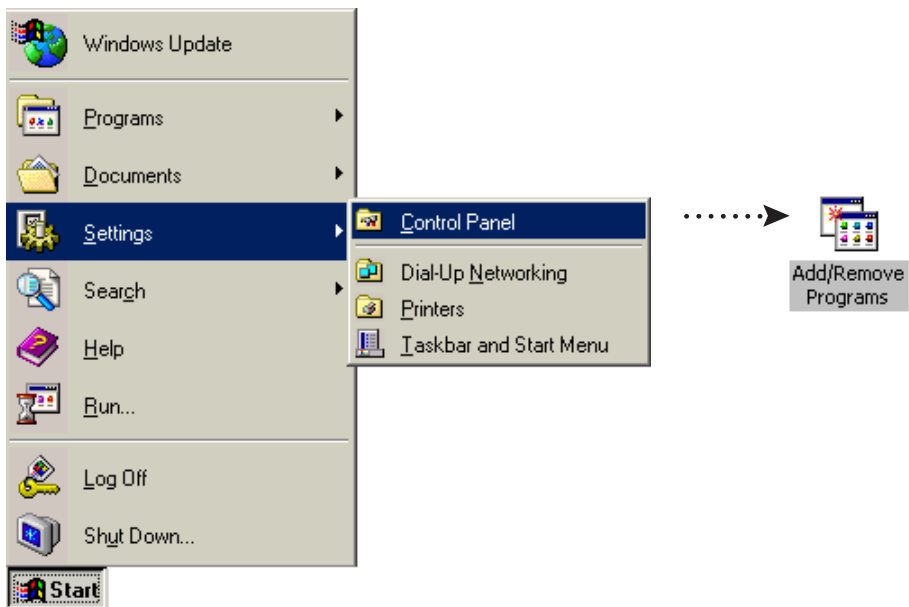
Insert the NI Serial Software CD.



Windows Me/9x

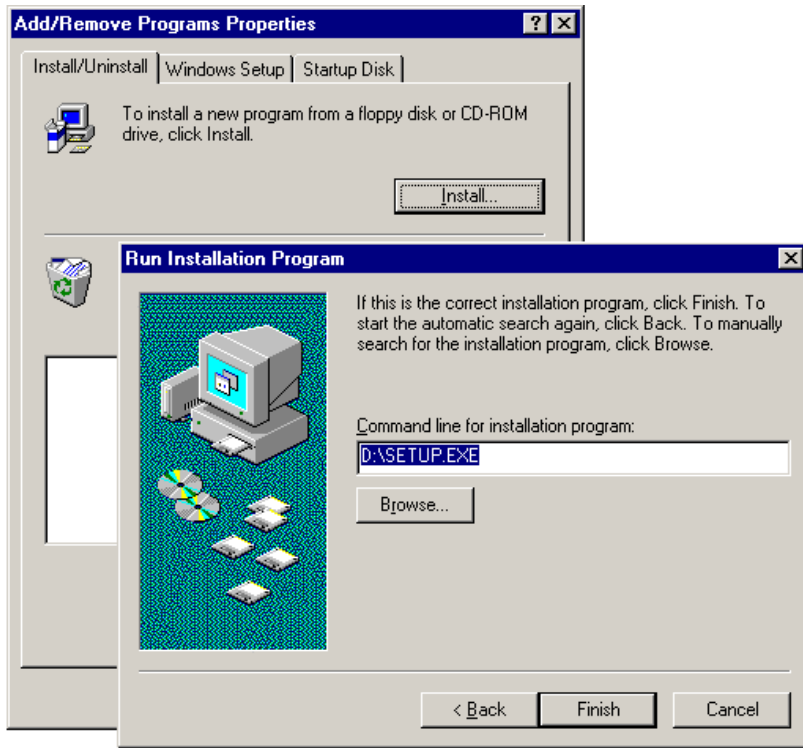
2

If the NI Serial setup starts automatically, follow the onscreen instructions and skip to Step 4. Otherwise, select Start»Settings»Control Panel. In the Control Panel window, double-click on Add/Remove Programs.



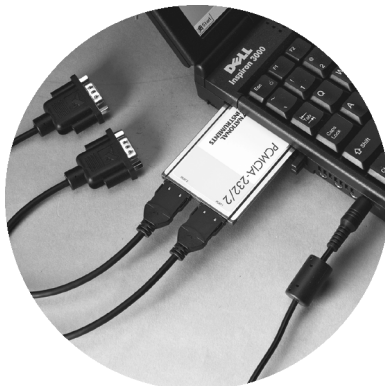
3

In the Install/Uninstall tab, click on Install. When the Run Installation Program window appears, click on Finish and follow the onscreen instructions.



4

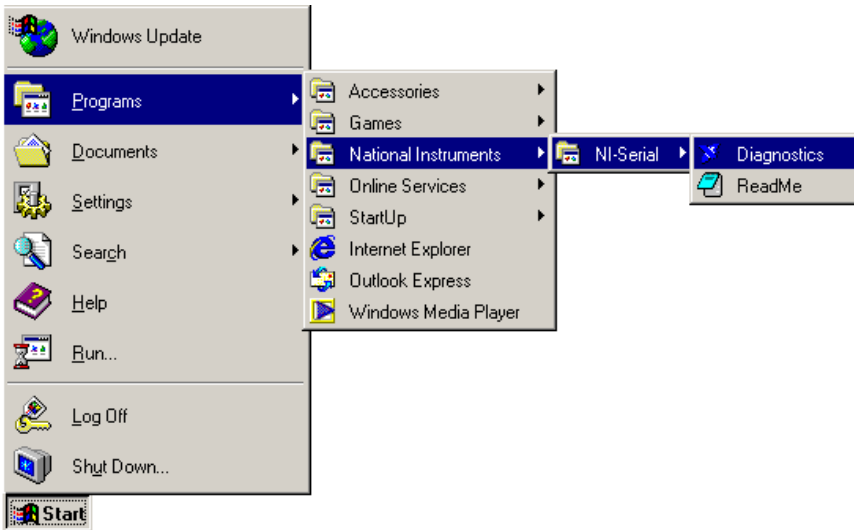
Insert the PCMCIA card.



.....> If prompted, click OK to choose Windows default driver

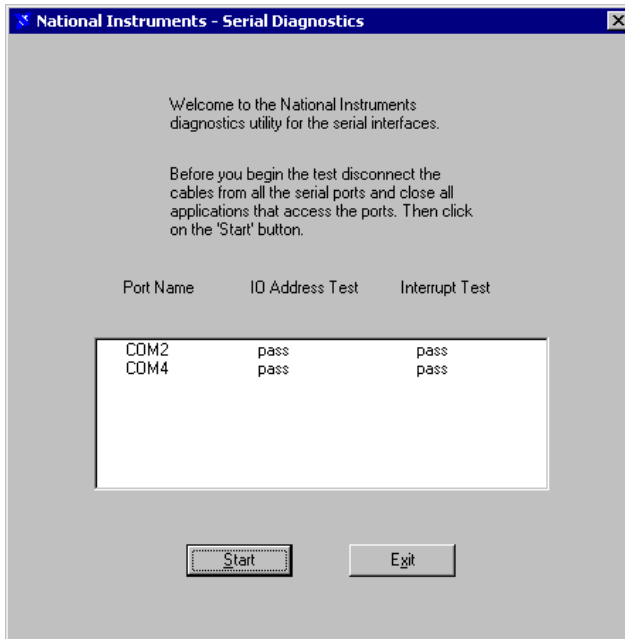
5

Select Start»Programs»National Instruments»NI Serial»Diagnostics.



6

The Serial Diagnostics Window appears. Click Start to run the diagnostics.



7

Connect the cables.

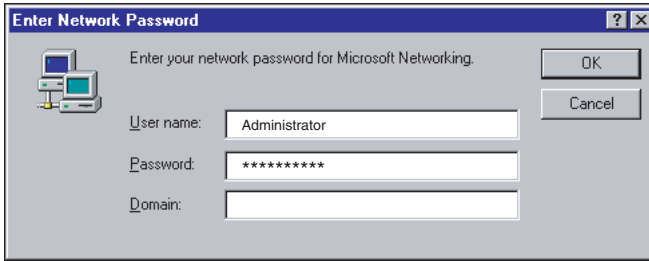


Refer to your National Instruments serial manual (in PDF format on the CD) for more information about troubleshooting problems, configuring the hardware and software, programming requirements, and more.

PCMCIA Serial Installation for Windows NT

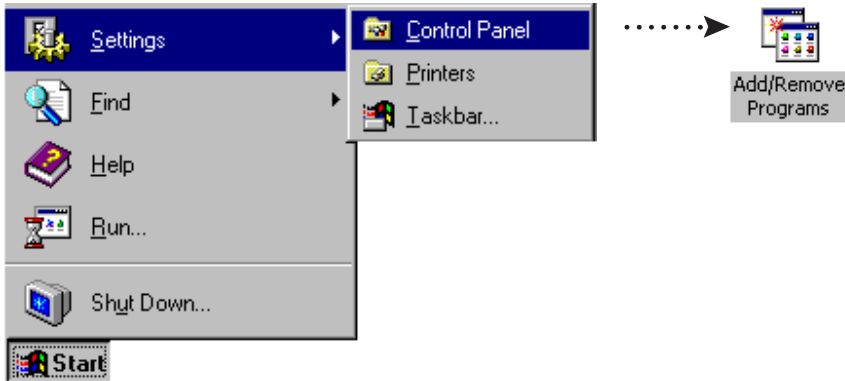
1

Log on as Administrator or as a user with administrative privileges. Insert the NI Serial Software CD.



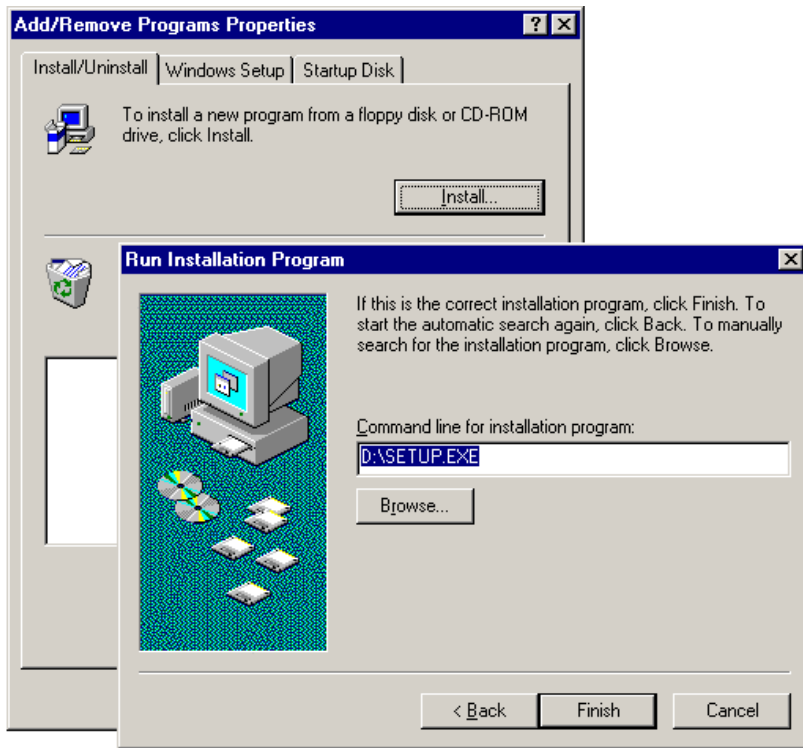
2

If the NI Serial setup starts automatically, follow the onscreen instructions and skip to Step 4. Otherwise, select Start»Settings»Control Panel. In the Control Panel window, double-click on Add/Remove Programs.



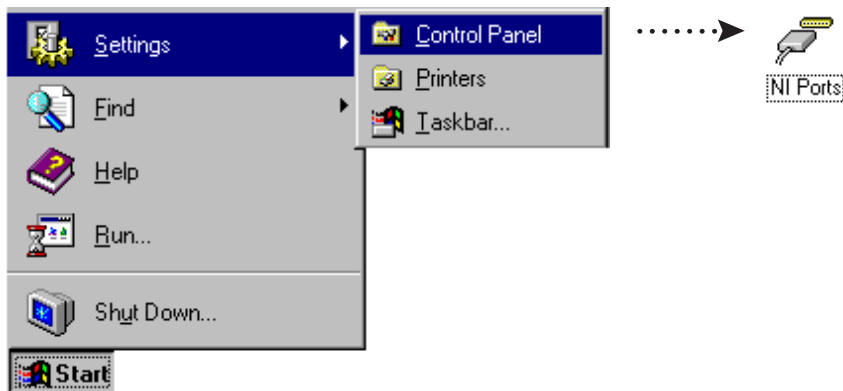
3

In the Install/Uninstall tab, click on Install. When the Run Installation Program window appears, click on Finish and follow the onscreen instructions.



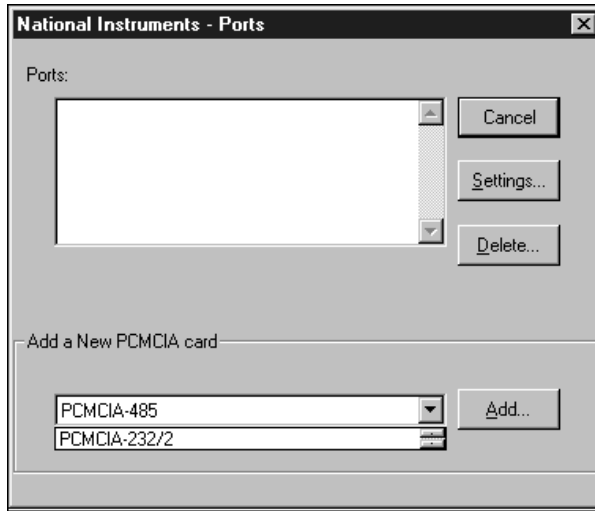
4

Select Start»Settings»Control Panel. In the Control Panel window, double-click on NI Ports.



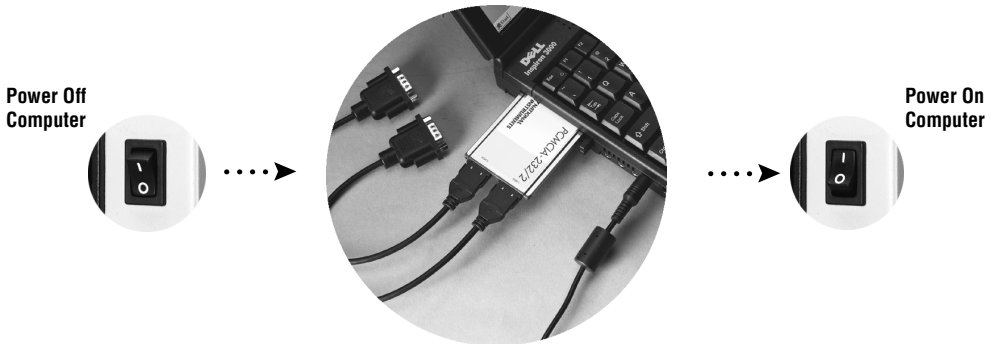
5

In the National Instruments – Ports Window, select your PCMCIA card type and click on Add. Select Conflict Free Resources and click on OK and Close.



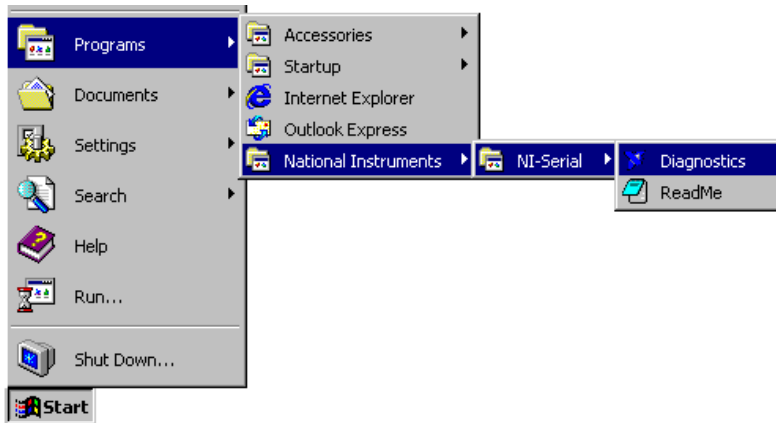
6

Remove the software CD. Shut down the computer, insert the PCMCIA card, and then power on the computer.



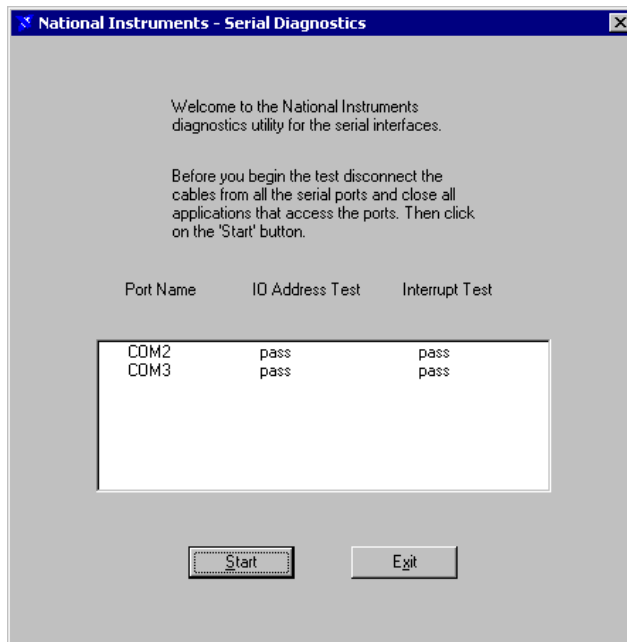
7

Select **Start»Programs»National Instruments»NI Serial»Diagnostics**.



8

The Serial Diagnostics Window appears. Click **Start** to run the diagnostics.



9

Connect the cables.



Refer to your National Instruments serial manual (in PDF format on the CD) for more information about troubleshooting problems, configuring the hardware and software, programming requirements, and more.

PCMCIA Serial Installation for Windows 2000

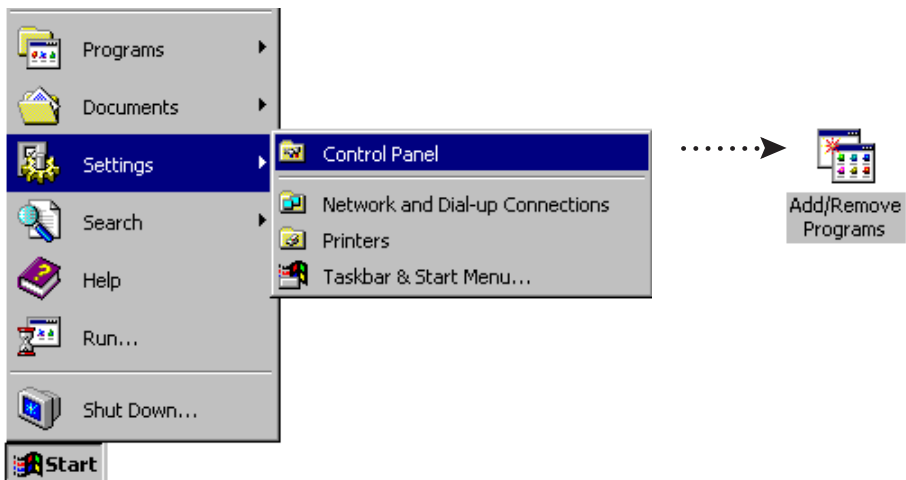
1

Log on as Administrator or as a user with administrative privileges. Insert the NI Serial Software CD.



2

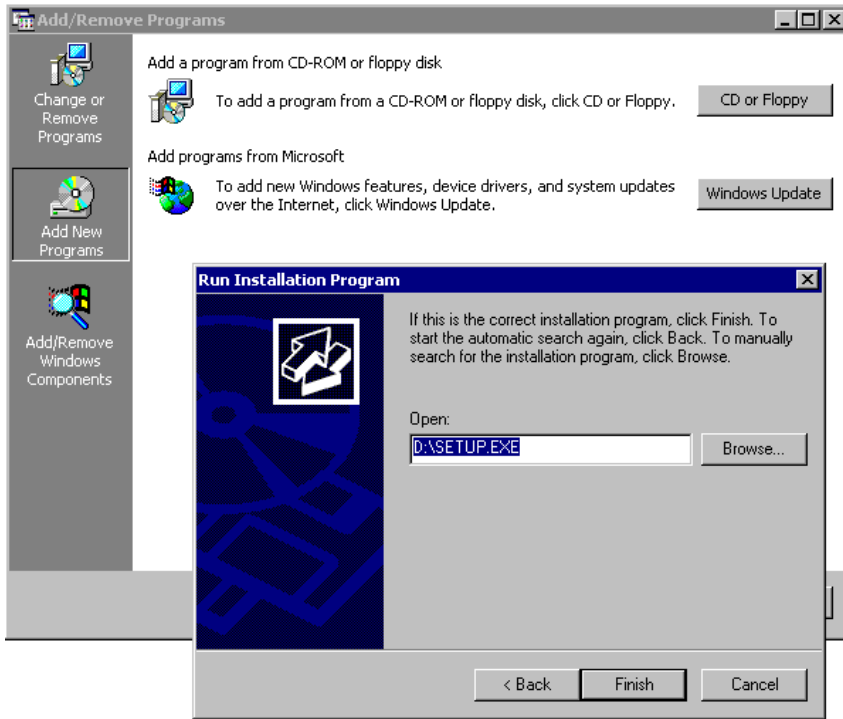
If the NI Serial setup starts automatically, follow the onscreen instructions and skip to Step 4. Otherwise, select Start>>Settings>>Control Panel. In the Control Panel window, double-click on Add/Remove Programs.



Windows 2000

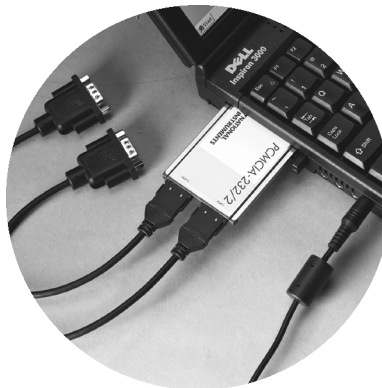
3

Click on Add New Programs, CD or Floppy, and Next. When the Run Installation Program window appears, click on Finish and follow the onscreen instructions.



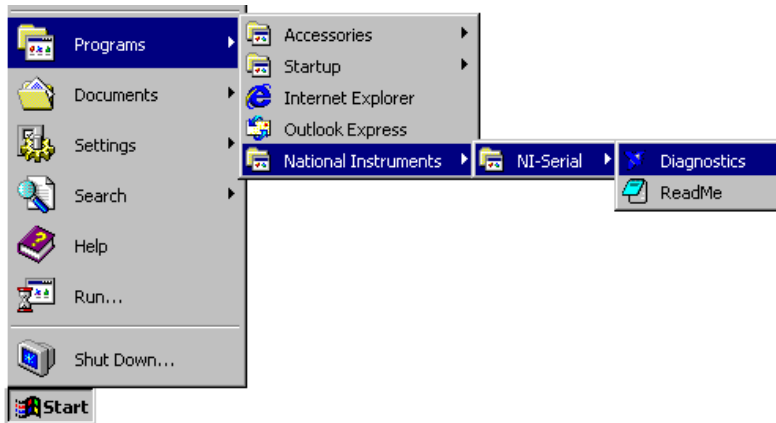
4

Insert the PCMCIA card.



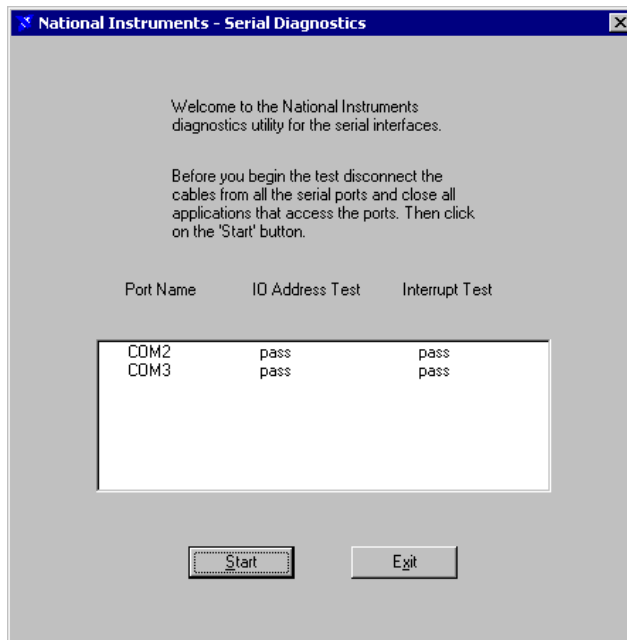
5

Select **Start»Programs»National Instruments»NI Serial»Diagnostics**.



6

The **Serial Diagnostics Window** appears. Click **Start** to run the diagnostics.



7

Connect the cables.



Refer to your National Instruments serial manual (in PDF format on the CD) for more information about troubleshooting problems, configuring the hardware and software, programming requirements, and more.



ni.com/support
ni.com/ask

Tel: (512) 795-8248 • Fax: (512) 683-5678 • ftp.ni.com

© Copyright 2000 National Instruments Corporation. All rights reserved. National Instruments™ and ni.com™ are trademarks of National Instruments Corporation. Product and company names mentioned herein are trademarks or trade names of their respective companies.



322936A-01

Sep00